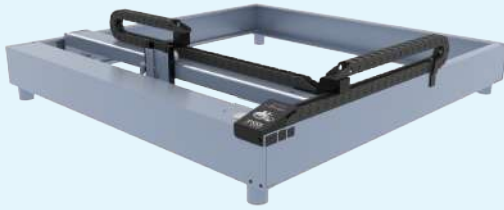




# Drag Chain Kit Xtool D1 & D1pro

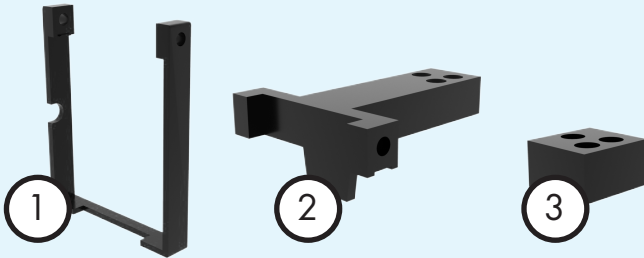


## PART LIST

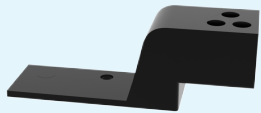
- Carriage Bracket (3 parts)
- Y Bracket
- Y Holding Clip
- 3 - M3x12mm
- 5 - M3x14mm
- 1 - M3x18mm
- Locking Nut
- Front Cover
- Laser Module Cable
- X Stepper Motor Cable
- Air Hose

### Mounting Hardware

#### Carrier Bracket (3 parts)



#### Y Bracket



#### Y Holding Clip



#### Front Cover



2mm Hex Socket Screws

3 M3x12mm

1 M3x18mm

5 M3x14mm

1 M3 Locking Nut

## IMPORTANT

**WARNING:** This is considered a mod to your machine and may void the warranty. AlivePixel is not responsible for any damage during installation or operation of your Xtool Laser.

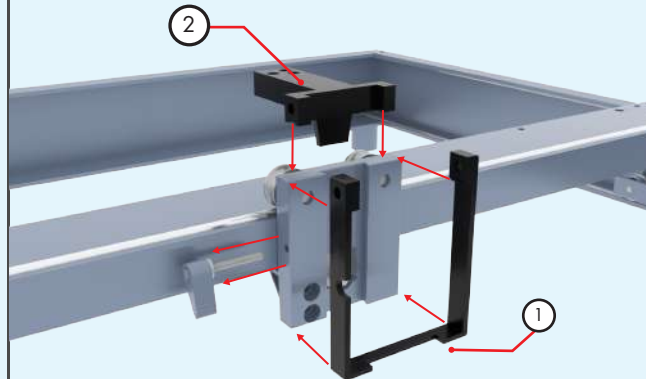
Make sure that the machine is off and the power cord has been disconnected from your Xtool.

Remove your Laser module, disconnect the main cable and remove all cables except from Y stepper motor to have a clean working area.

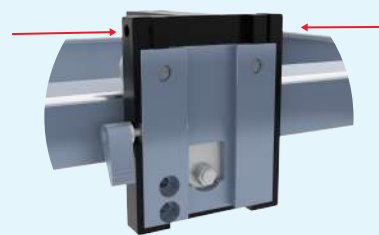
## STEP 1

### Carrier Bracket

Take care to clean your laser before installation. Start with part number 1 and 2 of the carrier bracket.



X2  
M3x14mm



Using two M3x14mm screws (included) attach part number 2 to number 1, **There should be a gap on each side to make sure is centered.** Place the ratchet screw (side screw) back in place.

## STEP 2

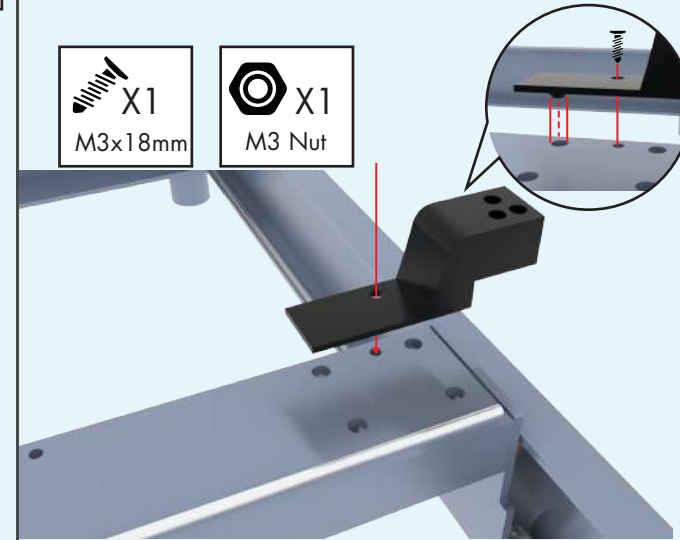
### Y - Bracket

Using provided M3x18mm screw and locking nut, secure the bracket as shown below.

**DO NOT TIGHTEN THE NUT ON THIS PART YET**

X1  
M3x18mm

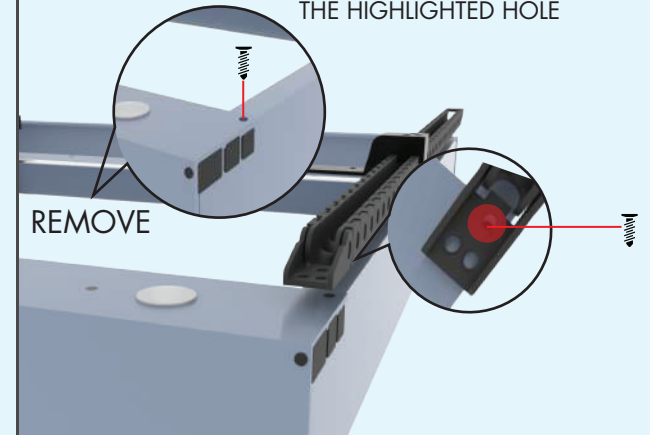
X1  
M3 Nut



## STEP 3

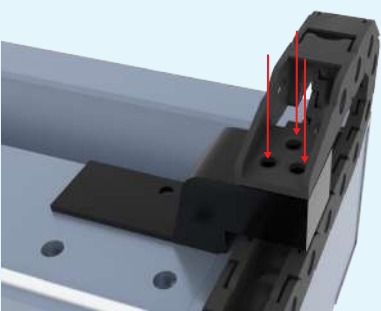
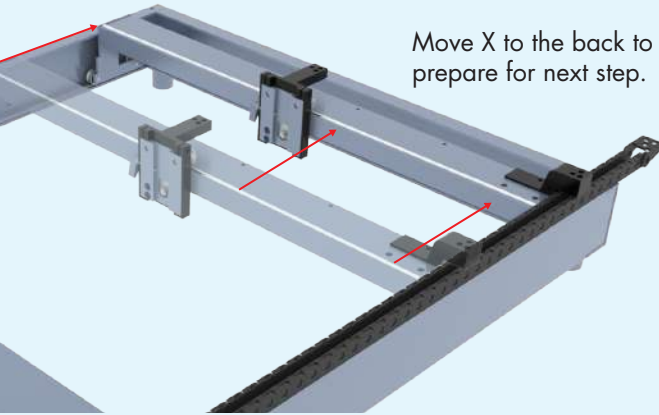
### Y - Drag Chain

USING THE ORIGINAL SCREW, TIGHTEN YOUR DRAG CHAIN IN THE HIGHLIGHTED HOLE

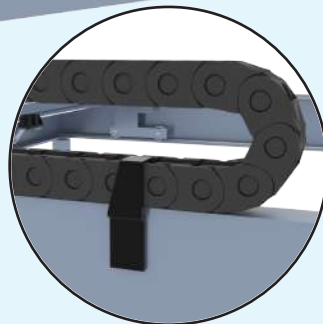
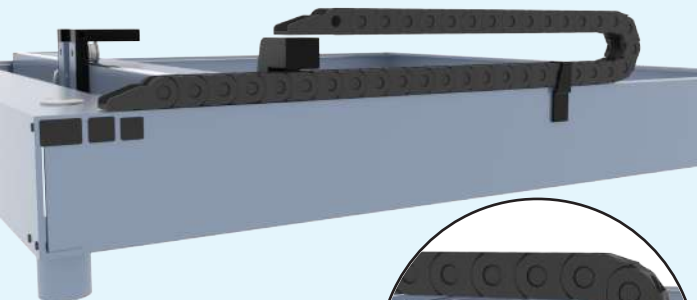


# STEP 4

## Attaching Drag Chain to Y - Bracket



Bend the end of your Drag Chain over the Y - Bracket. Using the provided M3x12mm screw, secure the Drag Chain on the Y - Bracket.

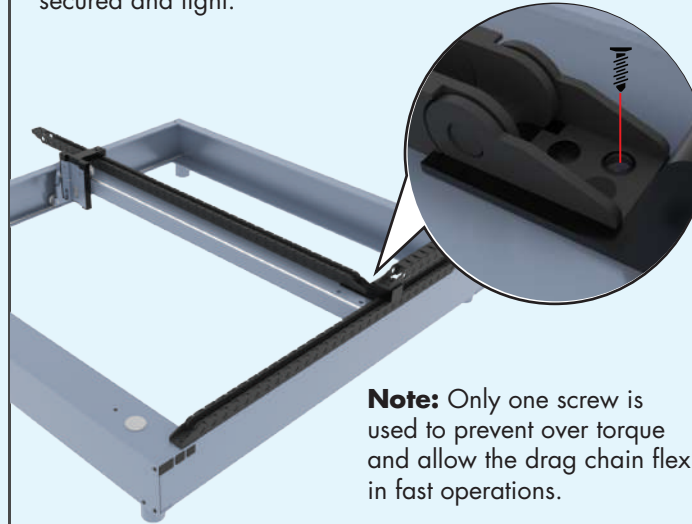


Move the Gantry forward and add the clip to the side of your machine behind where the chain bends to ensure a proper alignment and smooth movement.

# STEP 5

## Attaching Drag Chain to Y - Bracket

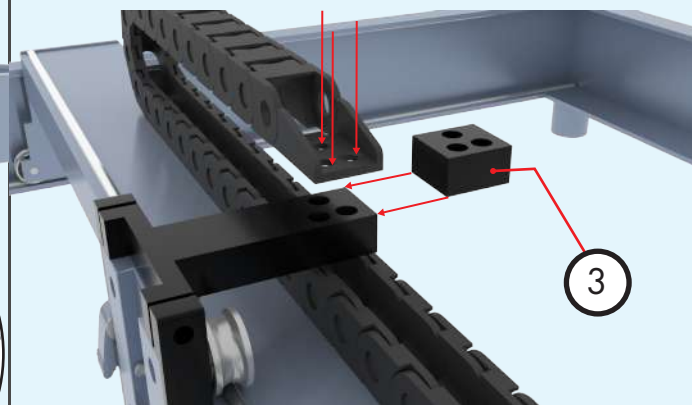
Remove the screw used in Step 2. Set the X Drag Chain in place. Once there, make sure the screw and nut are secured and tight.



**Note:** Only one screw is used to prevent over torque and allow the drag chain flex in fast operations.



Bend the end of your Drag Chain over the carrier bracket, adding part number 3. Using the provided M3x14mm screw, secure the Drag Chain on the carrier.



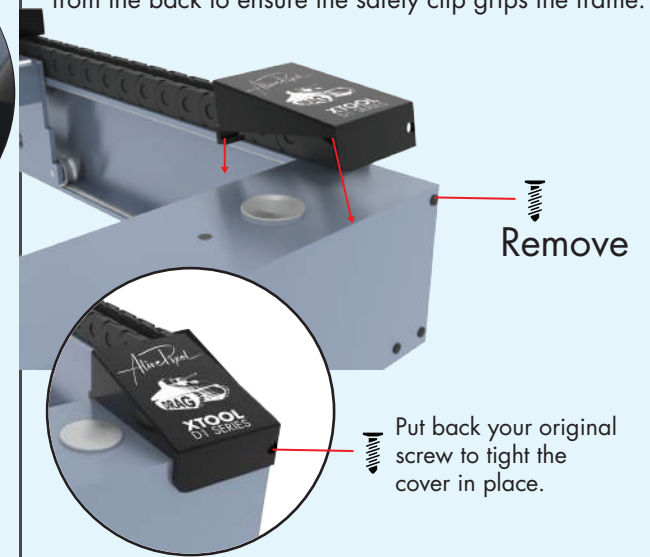
**Important:** Use the spacer to properly level and attach the X Drag Chain to the laser carrier.

# STEP 6

## Front Cover.

The front cover adds extra protection for cables that need to bend and connect to the mainboard.

Remove the front screw and place the cover by sliding it from the back to ensure the safety clip grips the frame.



Remove

Put back your original screw to tight the cover in place.

## Final Touches

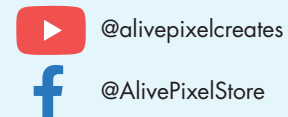
At this point everything is set and ready. All you need to do is reconnect your cables on the mainboard, connect the stepper motor, and add your laser module back to your carrier.

It is a good idea to first test mobility with your hands and also run a slow test first with your laser software.

Take your time to get familiar with your new setup.

Clean your drag chain with compressed air from a can or air compressor.

Follow as on:



*AlivePixel*  
Thank you for your support  
Daniel G.